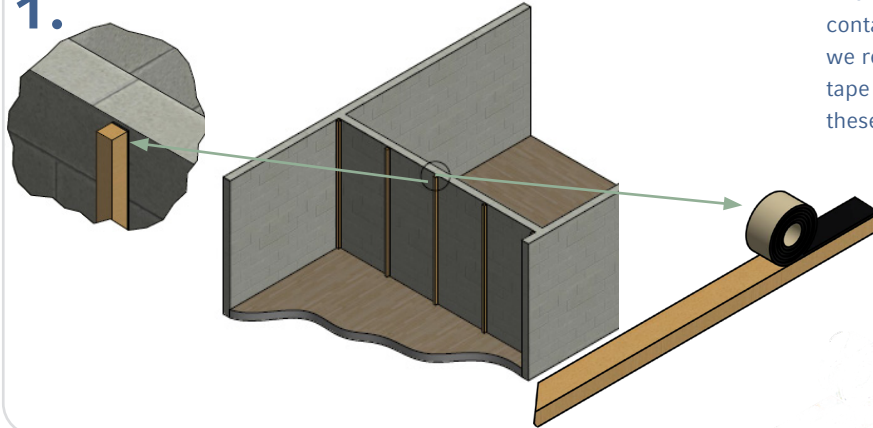


HOW TO BUILD A CURTAIN WALL



TO THE INSTALLATION VIDEO

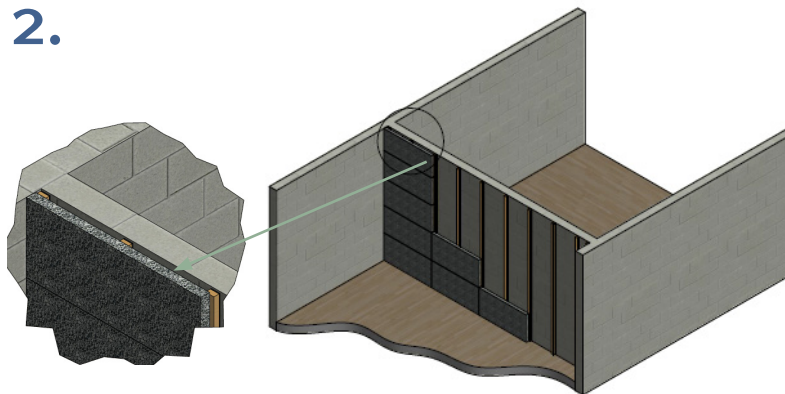
1.



In order to prevent a sound bridge due to direct contact between the wood slats and the wall, we recommend applying our [soni NBR](#) sealing tape to both sides of the slats and then fixing these to the wall using dowels and screws.



2.

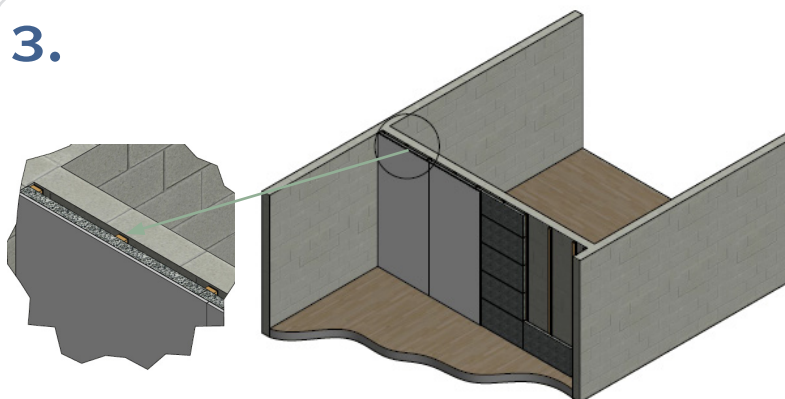


The empty spaces can then be filled with our [soni COMPOSITE](#) or [soni 491 STL](#) noise protection panels.

Advice: For even better sound insulation we recommend fixing the acoustic-panels to the wooden slats (30 mm). The resulting air gap provides an additional insulation effect.



3.



As a last step, plaster wallboards or particle boards are fixed on the slat framework with screws.

Practical tip: For optimum overall effectiveness of the curtain wall, the wallboards can be decoupled from the side walls, the ceiling and the floor by filling the gaps with an acrylate compound.

